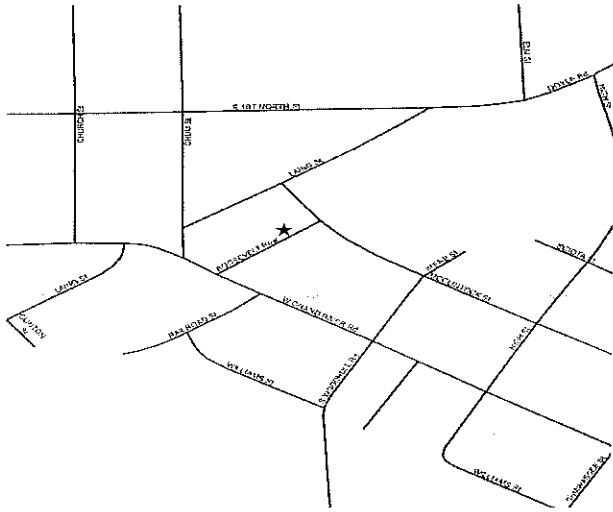


LAINGSBURG RECYCLING DROP-OFF CENTER GUIDELINES



Laingsburg drop-off is located on Roosevelt Row, downtown Laingsburg. The site is open from 9am-1pm the 2nd Saturday of every month. There is no collection in May.

For more information please contact Ellen or Terry Link at (517) 651-2005.



Please see other side of flyer for items accepted for drop-off and how to properly prepare them.



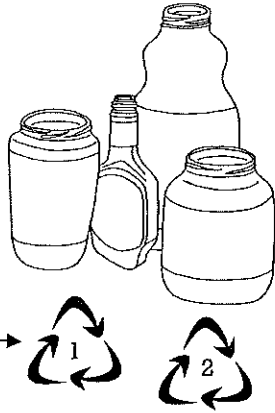
→
For more information about the drop-off center, please contact Clinton County Department of Waste Management at 989-224-5186 or at recycle@clinton-county.org.

#1—#7

**Plastic Bottles,
Jars & Tubs**

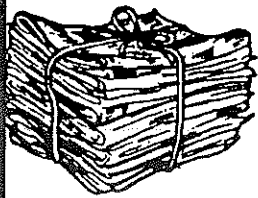
Please remove caps & lids and lightly rinse containers.

Look for symbol on bottom of container.



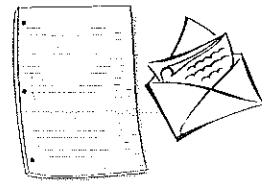
All colors of plastic bottles, jars and tubs accepted. **SORRY!** No motor oil or pesticide containers.

\$3 Donation Appreciated!

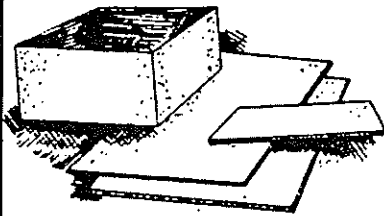


Newspaper & Inserts
No separating or sorting required. Do not put newspapers in plastic bags!

Mixed Office Papers
Includes white, notebook, colored paper and envelopes.



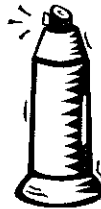
Corrugated Cardboard
Must have wavy corrugation in middle.



Sorry! No boxboard or wax coated boxes accepted. Remove all packaging materials.



Magazines & Glossy Catalogs



Empty!! Aerosol Cans

Please remove lids.



Clear & Brown glass jars and bottles ONLY!

Remove caps and lids and place those in garbage. Labels may be left on and lightly rinse container. **SORRY!** We do not accept drinking glasses, light bulbs, window glass, mirrors, ceramics, dishes and cookware.

Metal Cans & Aluminum

Steel, tin, aluminum and bi-metal cans and aluminum foil. Labels may be left on and containers need to be lightly rinsed. **SORRY!** We do not accept scrap metal or other metals.

